




Updated on 18 Mai 2026

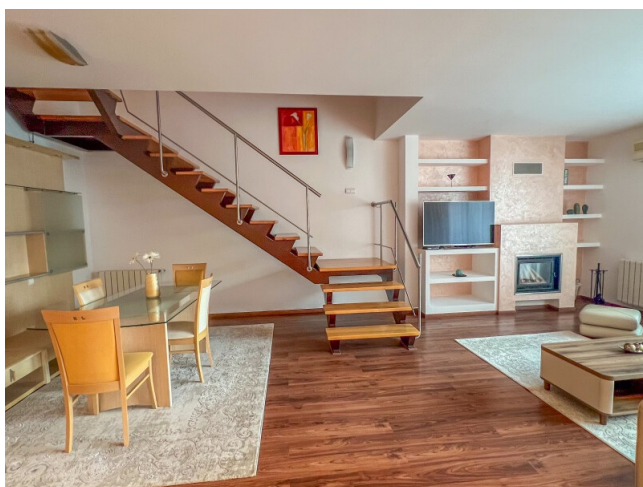
spacious 3-bedroom villa with terrace and private garden

2,600 EUR / month

Web Reference

#71256

 Ibiza Residential Park, Iancu Nicolae Baneasa Zoo,
Bucharest / Ilfov



<https://dev.blissimobiliare.ro/en/villa-3-bedrooms-for-rent-iancu-nicolae-pipera-bucharest-ilfov-71256>

Description

BLISS Imobiliare presents a special villa, located in the Iancu Nicolae area, in the Ibiza Residential Park complex. The villa has a usable area of 217 sqm, with a floor plan P+1+M, and is fully furnished and equipped. The ground floor consists of a spacious and bright living room with fireplace and dining area, a fully equipped closed kitchen with access to the terrace and the beautifully landscaped 80 sqm private garden, bathroom and garage. Upstairs we find the master bedroom with its own bathroom and two other bedrooms with a shared bathroom. The attic is an open space.

The area where the apartment is located is one with many facilities.

The villa is located in a highly sought-after area, thanks to the quick access to facilities and top quality services. Starting from local businesses, including shops, grocers, cafes, restaurants, fitness rooms, beauty salons, clinics (aesthetic, medical, dental and veterinary), car washes and car services, etc., to large shopping centers, the area Pipera offers everything you need for a modern and comfortable lifestyle. Just 3 minutes by car, you will find the Jollie Ville shopping center. Baneasa Shopping City, with the most exclusive shops and fine restaurants, is only 8 minutes away, Promenada Mall 16 minutes away, thus offering a varied range of shops, entertainment and restaurants.

Because education is very important, the area benefits from an impressive number of top schools and kindergartens, such as the American International School 9 minutes away by car, the British School of Bucharest 6 minutes away,

Mark Twain High School 3 minutes away , and the Cambridge School of Bucharest is 3 minutes away. These are just a few examples of nearby schools, and the list goes on. These are just a few examples of nearby schools, and the list can go on, which makes this villa the perfect home for a family with children focused on a harmonious growth and development, at high standards.

Therefore, this villa is ideal for a family that wants a comfortable and quiet lifestyle, in an exclusive area, connected to everything that matters for growth and development.

Property details	
Rooms no.	6
Useable surface	217m ²
Constructed surface	235m ²
Bedrooms no.	3
Kitchens no.	1
Bathrooms no.	3
Building type	Villa
Year built	2004
Year renovated	2025
State	Finished
Total land	500m ²
Courtyard	80m ²
Parking inside	1

Amenities


 Equipped kitchen

 Dishwasher

 Furnished

 Private heating

 Suitable for office

 Air conditioning

 Fireplace

 Swimming pool

Location



Photos

