




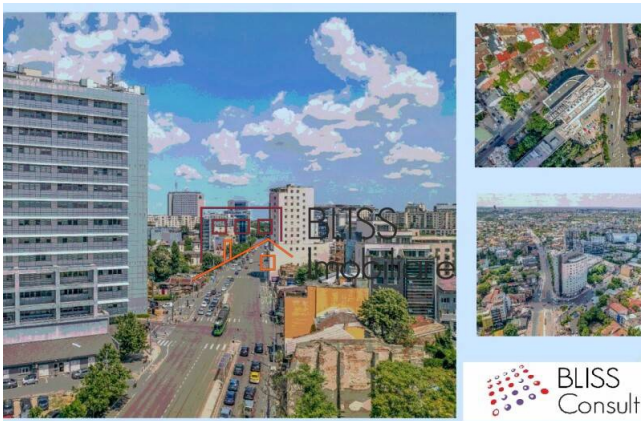
Updated on 29 August 2025

## Office space

 Bucharest Business Center, Piata Victoriei,  
Bucharest

**6,836 EUR +VAT / month**

Web Reference

**#125647**

### BUSINESS CENTER



<https://dev.blissimobiliare.ro/en/office-space-for-rent-piata-victoriei-bucharest-125647>

## Description

**Floor 2 | 434sqm GLA**

## Ideal solution for companies based in northern Bucharest

Discover the Bucharest Business Center, a premier Class A office building in the heart of Bucharest's Central Business District, strategically located in Victoriei Square. Formerly known as Bucharest Corporate Center, this iconic property offers an exceptional workplace for ambitious businesses.

Positioned at the intersection of Buzesti Street and Gh. Polizu Street, the building enjoys unparalleled accessibility, being just 400 meters from Victoriei Square and 500 meters from Gara de Nord railway station. Its modern architecture and premium facilities create an inspiring environment, while the proximity to two metro lines and numerous public transport options ensure seamless connectivity for employees and clients alike.

With a GLA of 12,098 sqm and typical floor sizes of 854 sqm, Bucharest Business Center provides flexibility to meet the needs of both large corporations and small businesses. Key features include 46 underground parking spaces, state-of-the-art HVAC systems, openable windows, and a BMS (Building Management System).

Notably, this building has served as the headquarters of IBM Romania, a testament to its prestigious reputation.

### Key Features:

- Location: Piata Victoriei, Buzesti Street

- Floor Space: 854 sqm typical floor size with a 10.27% add-on factor
- Accessibility: 8-minute walk to Gara de Nord | Piata Victoriei; buses, trams, and metro within walking distance
- Parking: 46 underground spaces
- Building Amenities: 24/7 security, raised flooring, suspended ceilings, four elevators, and modern facilities

Whether you're a startup or a multinational corporation, Bucharest Business Center offers the ultimate blend of prestige, convenience, and functionality in one of the city's most vibrant business hubs.

*(Former Bucharest Corporate Center | ONE Victoriei Center)*

<b>Property details</b>	
<b>Constructed surface</b>	434m <sup>2</sup>
<b>Building type</b>	Block
<b>Year built</b>	2006
<b>State</b>	Finished
<b>Elevator</b>	Yes
<b>Common service charges</b>	1736.00 EUR

### Amenities

 Not furnished

 Building heating

 Suitable for office

 Air conditioning

## Location

