




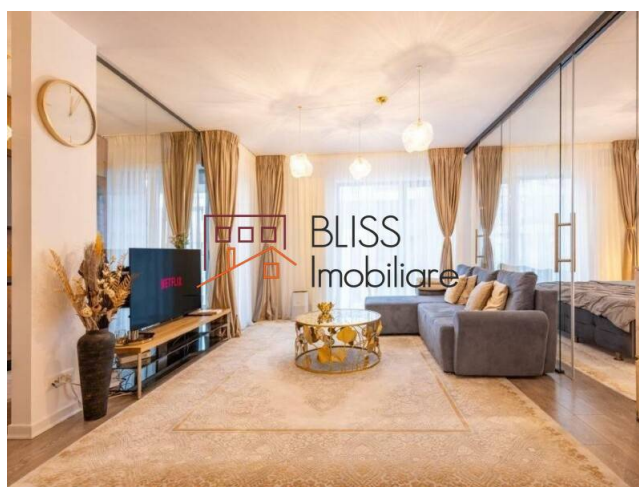
Updated on 9 Octombrie 2025

1-Bedroom Apartment in Cloud 9 – Fully Furnished, Underground Parking Included

Web Reference

#124579

 Cloud9 Residence, Floreasca Business Park
Promenada Mall, Bucharest



<https://dev.blissimobiliare.ro/en/apartment-1-bedroom-for-rent-aviatiei-promenada-mall-metro-pipera-bucharest-124579>

Description

1-Bedroom Apartment in Cloud 9 – Fully Furnished, Premium Features, Underground Parking Included

Smart Features, Designer Furnishings & an Excellent Location for Urban Comfort

Discover a stylish and fully equipped apartment located in the Cloud 9 residential complex – one of the newest and most modern developments in the northern part of Bucharest. Positioned on the 2nd floor of an 11-story building, with a usable area of 50 sqm, this property is ideal for professionals or couples seeking comfort, functionality, and proximity to the metro, Promenada Mall, and the Pipera business district.

Modern Design, Smart Layout, and Technological Comfort

The apartment is fully furnished and equipped, featuring high-quality finishes and an inviting ambiance designed for daily comfort:

- Bright and cozy living room with a velvet extendable sofa, 138 cm Samsung 4K TV, and direct access to the covered balcony

- Modern kitchen with central island, ample storage space, and built-in appliances: refrigerator and dishwasher, electric cooktop and oven, microwave, espresso machine, toaster, and kettle
- Master bedroom with a spacious 180x200 cm velvet bed, two sets of luxury linens, floor-to-ceiling mirrored wardrobe with silent sliding doors, air conditioning, and ambient lighting
- Fully equipped bathroom with modern finishes and practical layout
- Covered and illuminated balcony, accessible from both the living room and bedroom – ideal for year-round relaxation

Premium Amenities and Smart Comfort

- Central heating system with wireless temperature control in each room
- Warm LED lighting and floor-to-ceiling glass walls for enhanced natural light
- Washer-dryer combo, Karcher vacuum and amXea robot, air purifier, hairdryer, ironing station
- Complete connectivity: Wi-Fi internet, cable TV
- 2 modern Kone elevators, secure access, and 24/7 video surveillance

Prime Location – Close to Everything That Matters

Ideally located just minutes from Aurel Vlaicu metro station, Promenada Mall, and the Pipera–Barbu Văcărescu office district, the apartment ensures quick access to:

- Herăstrău Park and Floreasca area
- Top restaurants, cafes, banks, and gyms
- Fast and reliable public transport

Underground parking space on level -2, with remote control access – included in the price.

Property details	
Rooms no.	2
Useable surface	50m ²
Apartment type	Apartment
Type of rooms	Independent
Bedrooms no.	1
Kitchens no.	1
Bathrooms no.	1
Building type	Block
Year built	2021
Config	2S+P+12
Floor	2
Balconies no.	1
State	Finished
Elevator	Yes
Parking inside	1


Amenities

 Equipped kitchen

 Dishwasher

 Furnished

 Building heating

 Air conditioning

 Fireplace

Location



Photos

